

401 GP 60 Repair Paste

Solvent free polyurethane repair paste
High build capability 20mm without slumping
Ideal for repairs to rubber surfaces

Cure Times

At 20°C (68°F) the product will have the following cure times

Usable Life	4-5mins
Tack free	30 minutes
Light loading	1 hour
Full loading	4 hours
Immersion/chemical	24 hours

Coverage Rates

0.42kg (1lb) of fully mixed product will give the following coverage rates –

0.4m ² at 1mm	4.3ft ² at 40mil
0.2m ² at 2mm	2.15ft ² at 80mil
0.13m ² at 3mm	1.4ft ² at 1/8"

Colour

Mixed material – Black paste
Base component – Black paste
Activator component – Opaque paste

Over-coating times

Minimum - as soon as it is touch dry.

Maximum - the over-coating time should not exceed 12 hours.

Typical Applications

Conveyor belts
Gasket repairs
Potting compound
Expansion joint filling

Technical specifications and characteristics

Mixing ratios	By weight	3:1
	By volume	3:1

Surface Preparation

Metallic Substrates

1. All oil and grease must be removed from the surface using an appropriate cleaner such as MEK.
2. All surfaces must be mechanically abraded using handheld grinders to **ISO 8501/4 ST3 (SSPC SP3 ST3)**.
3. Once abraded, the surface must be degreased and cleaned using MEK or similar type material.

PLEASE NOTE: For salt contaminated surfaces the substrate must be pressure washed with clean water and checked for salt contamination.

Concrete

1. If the concrete surface is contaminated, pressure wash using clean water.
2. Once the concrete is dry, lightly abrasive blast or scarify taking care not to expose the aggregate.

Rubber

1. Any frayed or fragmented rubber should be cut away to provide a sound repair area.
2. Edges of repair areas of belts etc should be undercut.
3. The surface of the rubber should then be roughened using a handheld mechanical grinder using a coarse pad or MBX Bristle Blaster.

Once all surfaces, metallic, rubber or concrete have been prepared, apply 402 Multi surface primer to all surfaces using a brush. Apply the primer as liberally as possible (avoid ponding) to the surface and leave to cure for a minimum of 20 minutes at 20°C (68°F).

Mixing and Application

STEP 1

Ensure you have 1 x cartridge gun, 1 x 420gm cartridge, 1 x nozzle, 1 x 402 Primer, 1 x spatula, 1 x applicator tool, 1 x reinforce tape



STEP 2

Dispense the contents of the Cartridge onto a clean mixing Surface



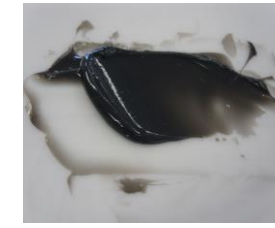
STEP 3

Using the green spatula provided Mix the base and activator Components together



STEP 4

Check to ensure that the 2 Components are fully mixed and The paste is a consistent black colour



STEP 5

Using the applicator tool provided Apply the mixed material to The primed repair surface

